

# Customized Solutions for the Healthcare Industry

Consultants. Partners. Trainers.



## Highlights 2020

Point of Care Lab Set-up at  
Max Hospital

Point of Care Lab Set-up at  
Apollo Hospital

Development and  
Deployment of COVID19  
Products

Forbes 30 U 30 – Asia -  
Healthcare and Science –  
2020

Launch of Education  
Training Models Kit

Launch of the only  
online Course on  
Medical Imaging,  
3D Modelling and  
3D Printing

**ANATOMIZ3D**  
Medtech Pvt. Ltd.

Personalising Healthcare

# Hello!

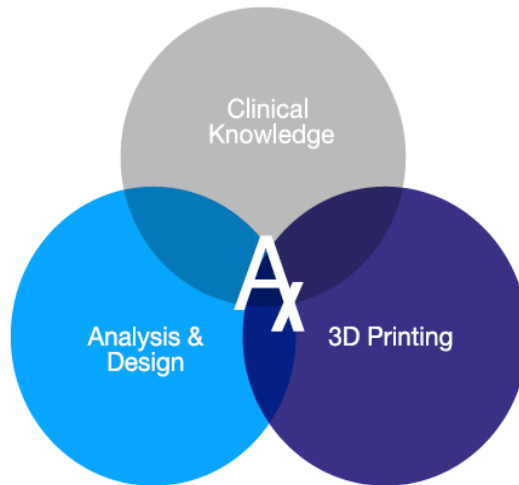
**We are Anatomiz3D.** A one stop design & manufacturing solution provider for customized medical products

---



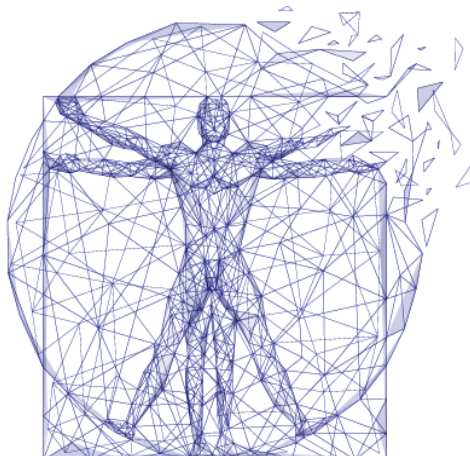
**Integrated design process  
combining expertise with passion**

---



**Multi Disciplinary Team comprising of  
Biomedical Engineers, Mechanical Engineers,  
AM Engineers, 3D Designers, Clinical Advisers, Industry experts**

---



# 1000+

Cases with 200+ Medical Teams

---

5+ Pharma & medical device manufacturers

5+ Diagnostic Centres

100+ Hospitals & educational Institutions

12+ Service providers, 3D Printer sellers and manufacturers

5+ Published Research

---

# 1<sup>st</sup>

India: Paediatric Cardiology Anatomical model for pre-surgical planning,

India & World: Tongue cancer model for pre-surgical planning

India: Kidney tumour model for pre-surgical planning.

---

**Ax**  
INNOVATION

Implant Molds  
Cranial Helmets  
SpineLEAD (Patented)

---

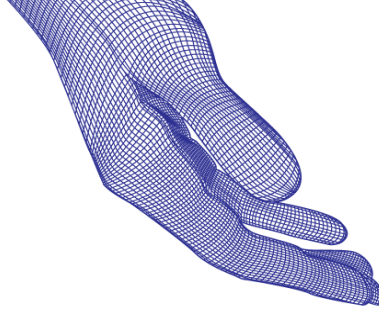


**Headquartered in India, and now going global**

Strategic partnership with Incredible3D, India's first ISO13485 certified metal 3D printing facility.



# Products



We leverage on the technology of 3D Modelling and 3D Printing to provide personalized healthcare solutions. We aim to engage with stakeholders across the ecosystem, to exploit this technology to its complete potential.

## Anatomical Models

Life-size replicas of a patient's anatomy accurately reconstructed from their CT/MRI scans into 3D models, which can be created in multiple materials, colours, opacities and shore hardness. These provide advanced 3D visualization for pre-surgical planning and patient communication.



## Implants and Molds

Implants and implant molds which are custom designed to perfectly match the defect region in a patient, ensuring the ideal aesthetic and functional fit. 3D printed in biocompatible material.



# Models of Engagement

## We work with:

- Doctors for individual cases.
- Hospitals to setup 3D printing labs.
- 3D Printing companies that require consultants for medical applications.
- Medical Device companies to partner with for complementary customized devices.
- Educational institutes to provide training on this technology.

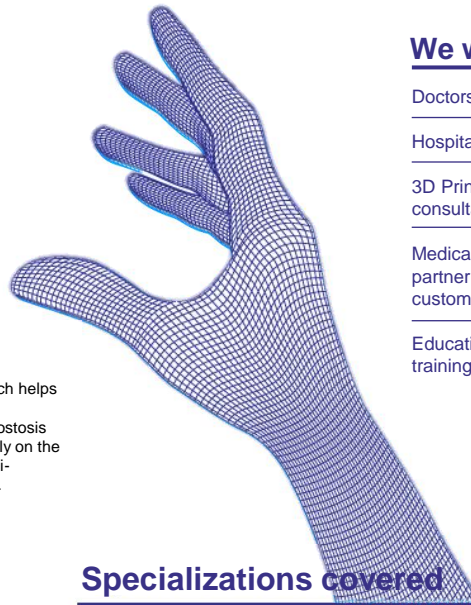
## Surgical Guides

A customized tool which fits on a predetermined area of a patient's bone and guides a surgical saw or drill in a pre-planned direction, ensuring a precise surgical outcome. Our pedicle screw guidance system allows surgeons to place screws in the spine with ease.

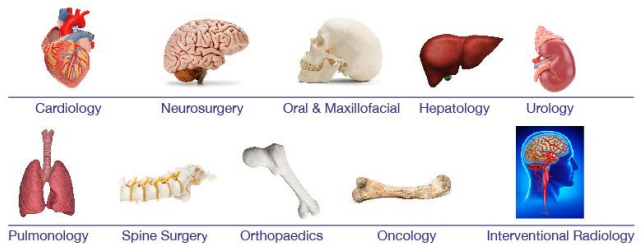


## Cranial Helmets

A customized orthotic device which helps reshape the skull, in case of abnormalities, or after Craniostylosis correction. Designed to fit perfectly on the head and lined with a layer of anti-microbial foam to ensure comfort.



## Specializations covered



## Education Models

Study models of complex defects across various specializations which are used as practice models by medical students, residents, fellows to train on. It could also be used by experienced surgeons to conduct workshops and share their technical skills with their peers. It allows for uniform learning across the group.

## Meet the Core Team



**Firoza Kothari**  
Co-Founder and CTO  
Forbes 30U30- Asia –  
Healthcare and Science 2020  
B.Tech Biotechnology  
Background in Tissue  
Engineering, Biomedical  
Instrumentation, Product and  
Business Development



**Sagar Shah**  
Co-Founder and CFO  
MBA, Finance  
Background in Wealth Management,  
Crisil Rating Analysis, Serial  
Entrepreneurship and Strategizing



**Sohrab Kothari**  
Co-Founder and COO  
MBA, Finance  
Background in Risk Management,  
Investment Banking, Wealth  
Management, Serial  
Entrepreneurship and Expansions



**Tarun Malkani**  
Mentor  
B.Chem Chemical, MBA  
Background in Pharma, Paints,  
Glass, etc., Serial Mentorship and  
Strategizing



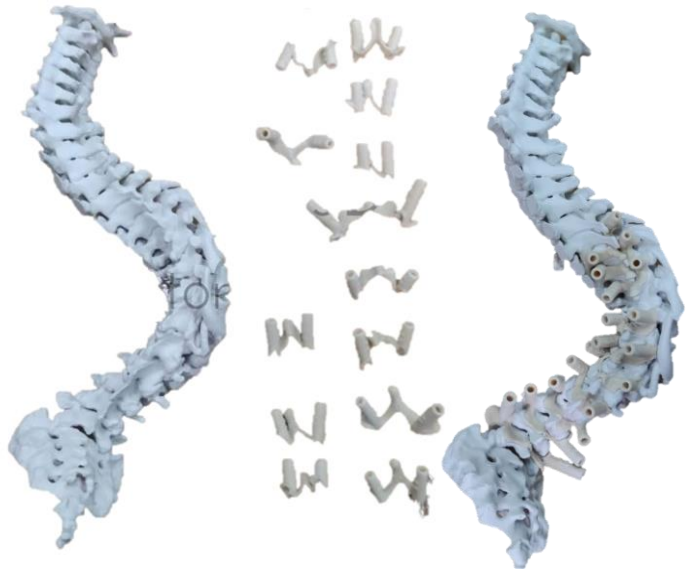
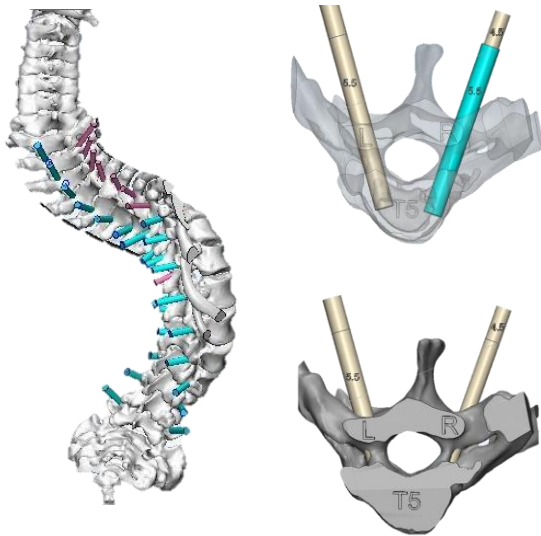
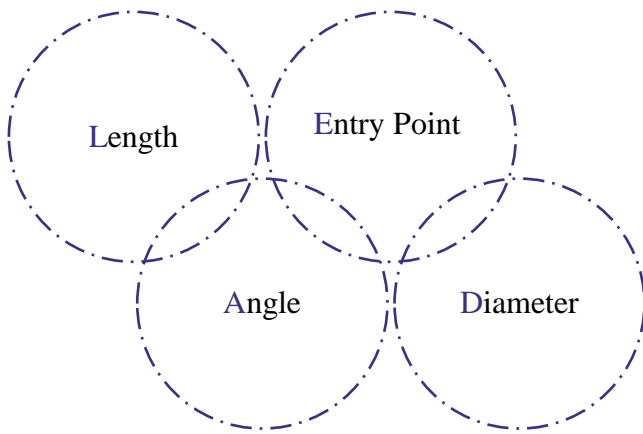
**Karan Shah**  
CMO  
BE, Aviation  
Background in Diagnostic  
Industry of more than a  
decade

# SpineLEAD

A process for design and manufacture of surgical drilling guides for pedicle screw placement

Provisional Patent number: CN101390773

Patent submission date: 1<sup>st</sup> October 2018



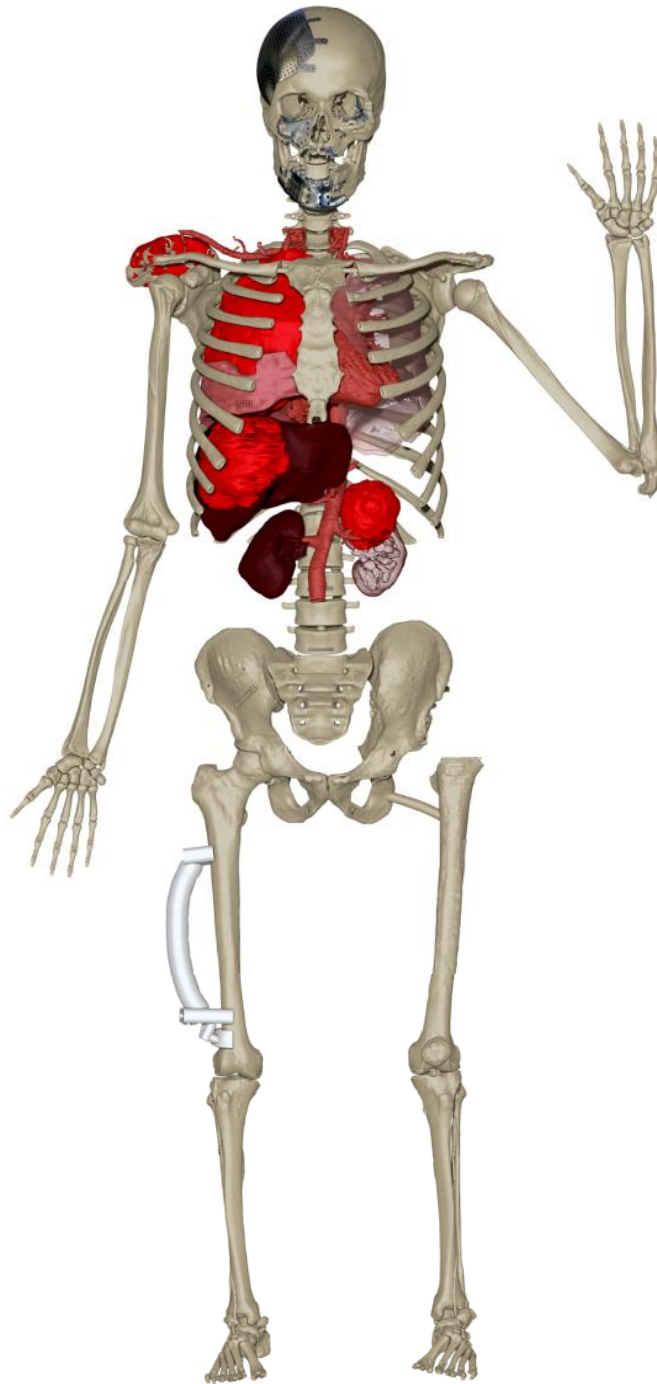
## Our Inputs

- Level wise trajectory planning
- Level wise suggestions for changes in preferred screw diameter if needed
- Level wise approvals
- Screw Entry point finalization
- Changes incorporation if any

## Production

- Jigs 3D Printed in Autoclavable and Biocompatible Material
- Anatomical models printed in material of your preference – Generally ABS Plastic

“we'd love to hear from you”



**Our Mascot: Hope**

In a world where epidemics are rising, clinical complexities are increasing and quality is key, we have the will to change things, we have the capability to improve healthcare with technology, we have the passion to make this world a better place, we have HOPE!

**INDIA**

Unit No. 112/114, 1st Floor, V1 Building Mehra Compound, Andheri Kurla Road,  
Sakinaka, Andheri East, Mumbai, Maharashtra 400072

**AUSTRALIA**

AZ3D, level 2, Flinders at Tonsley, 1284 south road, Tonsley, South Australia, 5042

[www.anatomiz3d.com](http://www.anatomiz3d.com)  
[info@anatomiz3d.com](mailto:info@anatomiz3d.com)